



INCREASED
SECURITY

The evolution of a unique pouch solution for ostomates with a parastomal hernia

S23

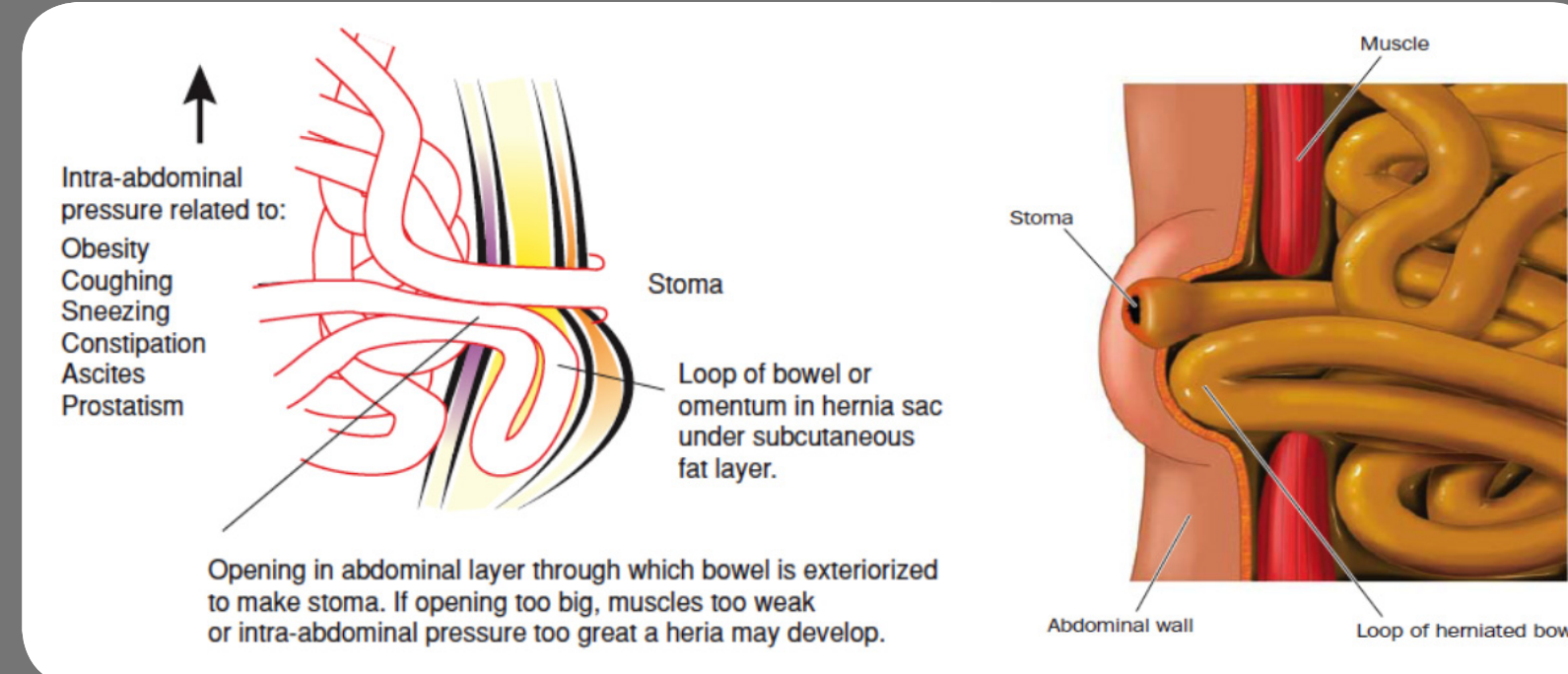
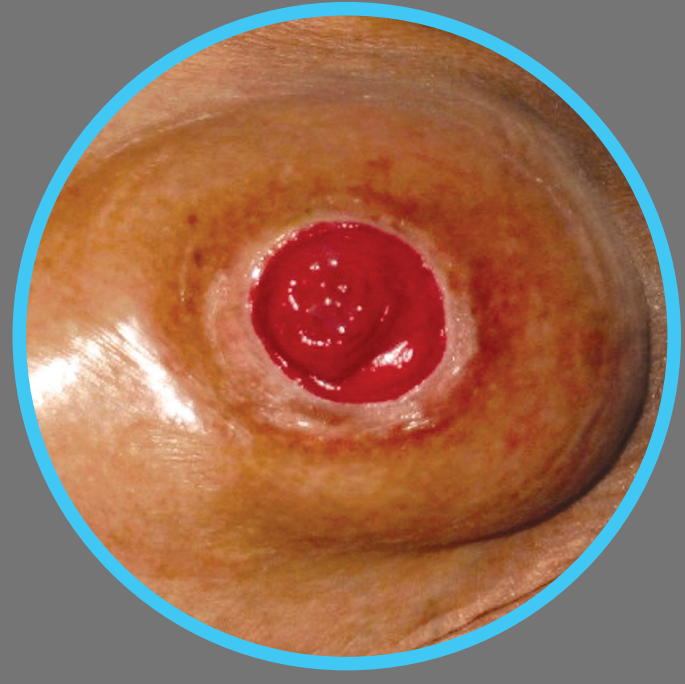
Dr. Arash Moavenian*

*Head of Research and Innovation at Welland Medical Limited
ArashMoavenian@wellandmedical.com

Introduction

Quality of life for ostomy patients can often be adversely affected by the development of a parastomal hernia (PH) and/or peristomal irregularities (PI) and this frequently presents a difficult challenge for stoma care nurses.

PHs tend to occur at the side of or immediately adjacent to the stoma and are quite a common adverse effect following stoma construction. PH's are difficult to diagnose as patients are not educated enough about the incidences and are often mis-diagnosed as a loss of muscle tone.



In the case of PIs the stoma may present as a sunken abdominal defect with creasing of the surrounding skin as it is drawn in because of tension.

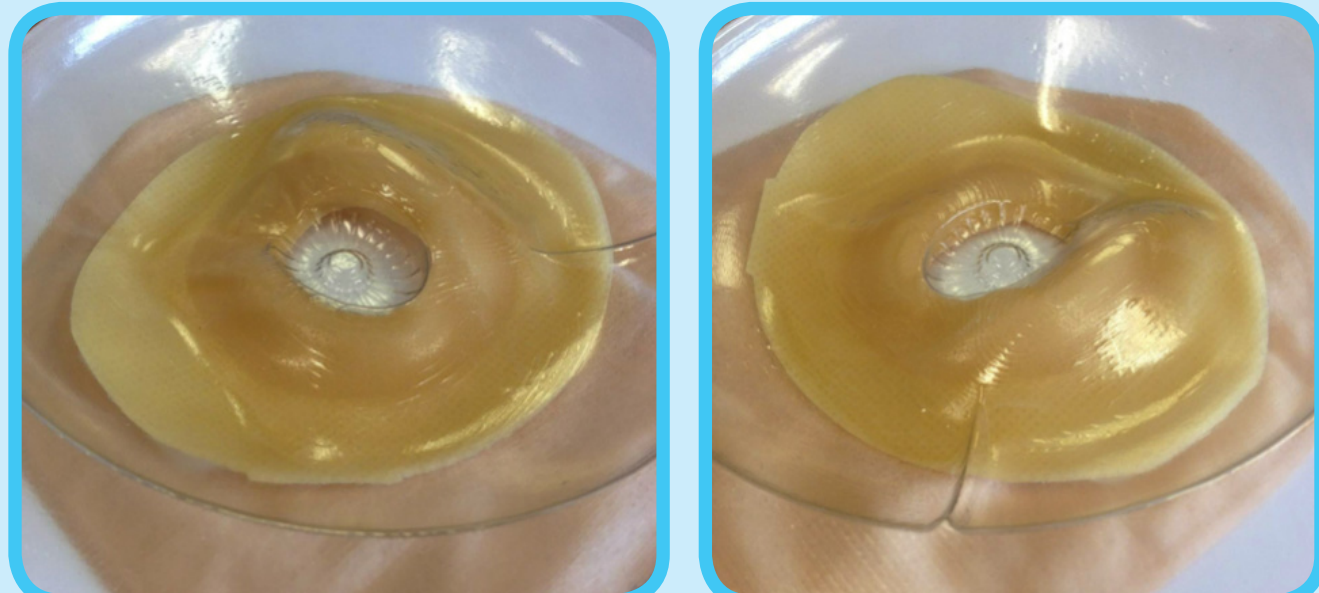
Stoma appliance dysfunction and leakage represents a complication requiring surgical intervention, but if patients have no or mild symptoms, surgical repair is avoided and a nonsurgical method of management is preferred.

Method

2001 The first version of a pouch with a soft, mouldable flange, which provides a secure seal around complex body contours and can be inverted for use with PHs was launched in 2001.

It was ideally suited to patients who suffer from peristomal recesses caused by post-operative weight gain or loss, uneven peristomal skin, moats, dips and/or scar tissue around the stoma site, patients who suffer from poor dexterity issues and who find it difficult to apply accessories such as flange extenders, washers and/or stoma pastes or for patients who just suffer from general leakage issues associated with standard flat flanged products.

The images below demonstrate the mouldability of this flange over a representational model of a Ph.



As demonstrated the flange can adapt to uneven skin surfaces, recesses or protrusions around the stoma site.

2012 Brought new pouch aesthetics, more ergonomic hydrocolloid flange and pouch shapes, split softback and the addition of integrated belt loops.

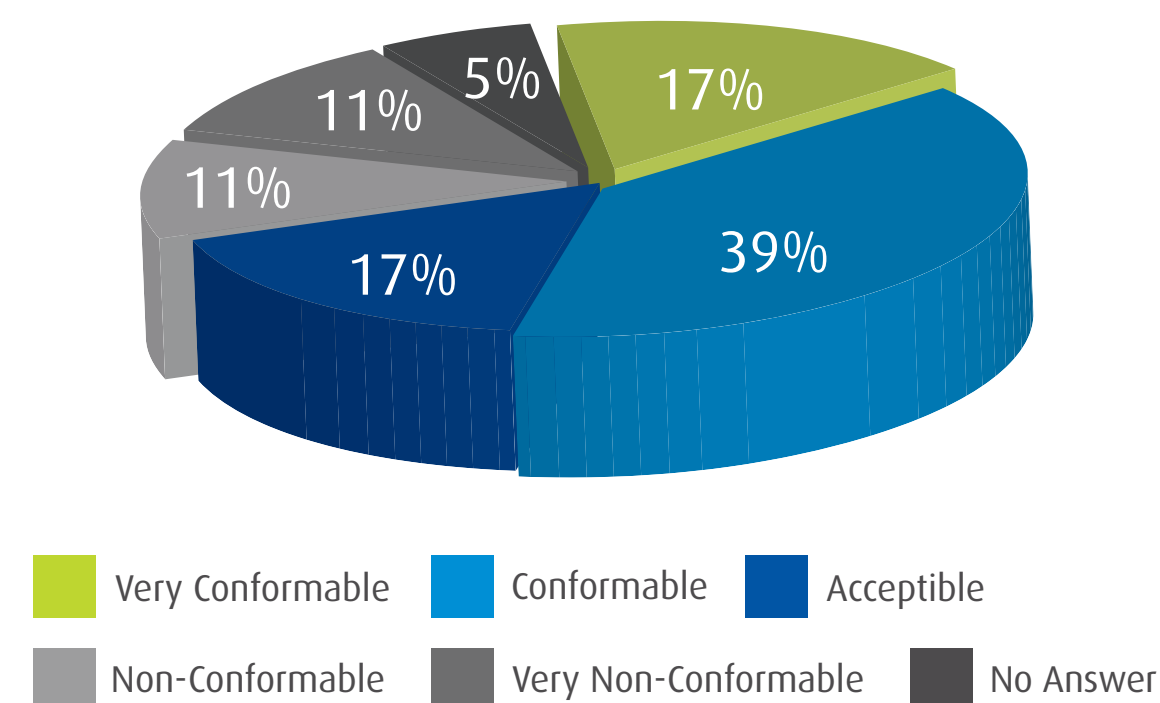
2017 A range of pouches with a soft and mouldable flange containing Manuka honey in the hydrocolloid as well as new pouch aesthetics, additional pouch sizes and the introduction of a larger flange size (60mm) was launched. This range is recommended for PHs, uneven skin dips, moats or scar tissue surrounding the stoma or a stoma positioned in a crease or skin fold or for ostomates who have poor dexterity and find it difficult to use washers or pastes and provides a secure seal around complex body contours where a flat flange is not suitable.

In pre-launch evaluations 18 participants tried the new 60mm flanged product and the results shown demonstrate how evaluators found the new product as an alternative to their current pouch.

Conformability

56% of evaluators said they found the evaluation pouch to be conformable or very conformable

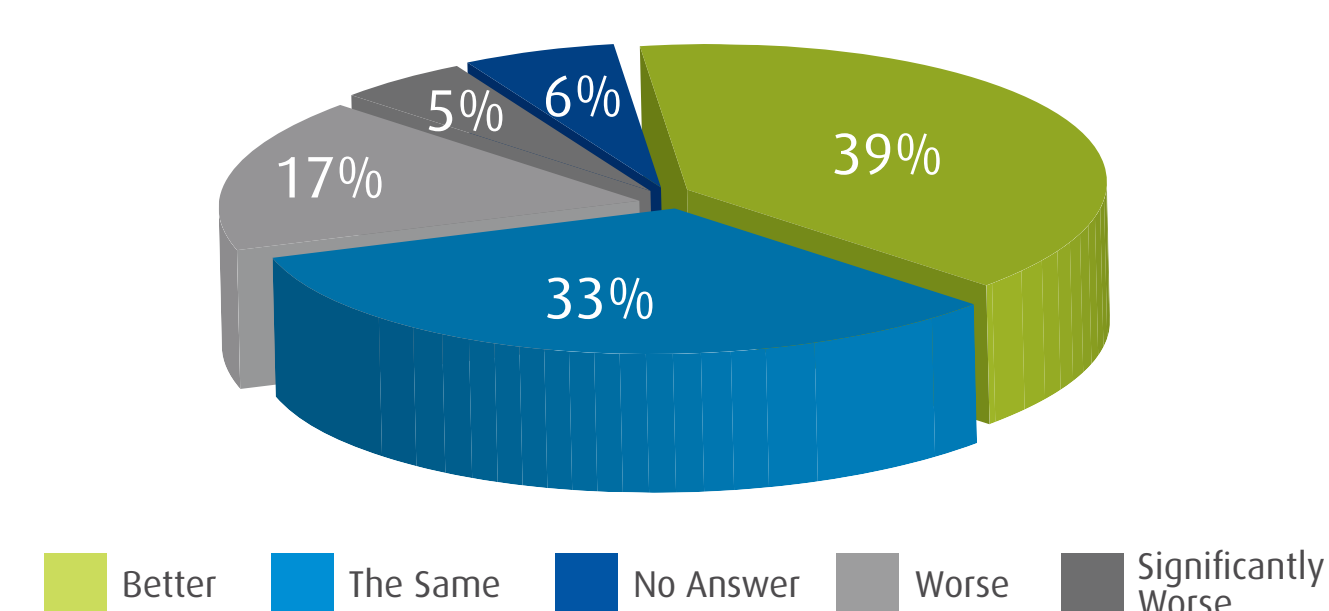
How would you rate the conformability of the evaluation pouch (how it moulded to your body)?



Skin Condition

72% of evaluators said their skin condition was the same or better

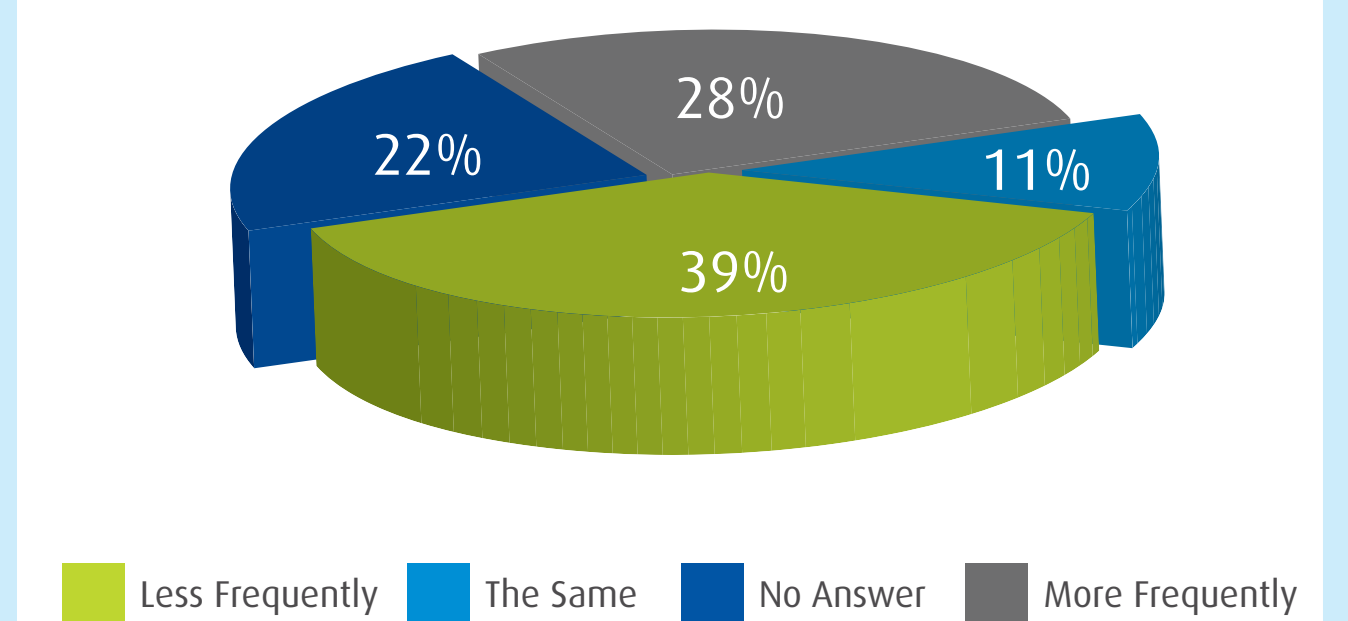
While using the evaluation pouch how did your skin condition compare to when you use your regular pouch?



Leakage

39% of evaluators said they experienced leakage less frequently or much less frequently

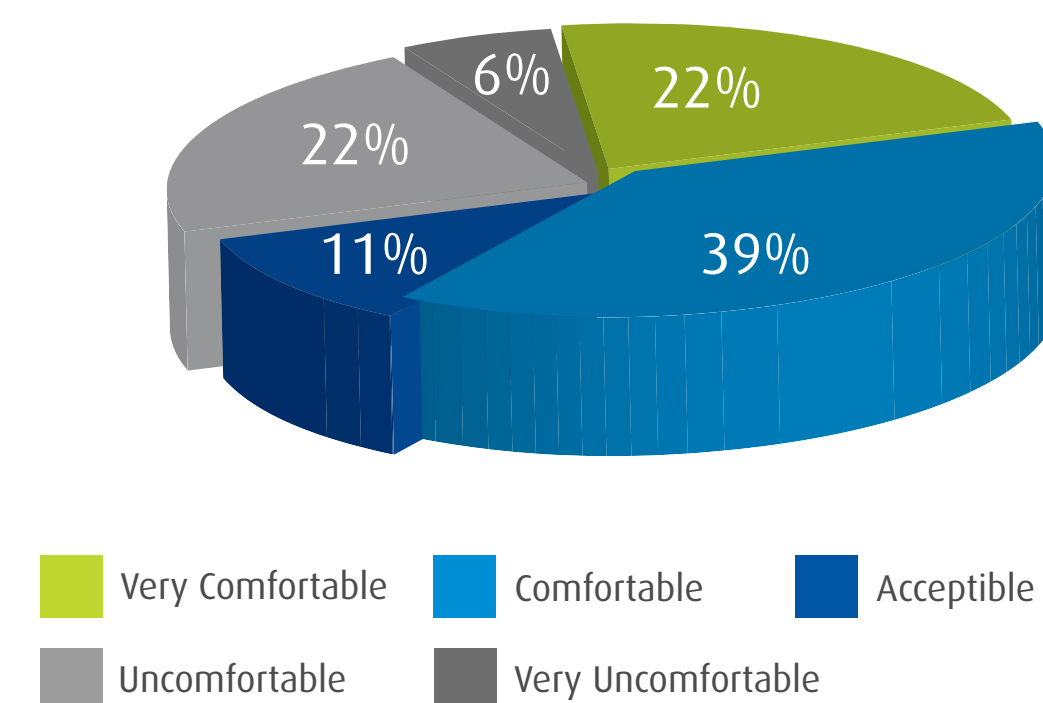
While using the evaluation pouch, did leakages occur more or less frequently?



Comfort

61% of evaluators said they found the evaluation pouch to be comfortable or very comfortable

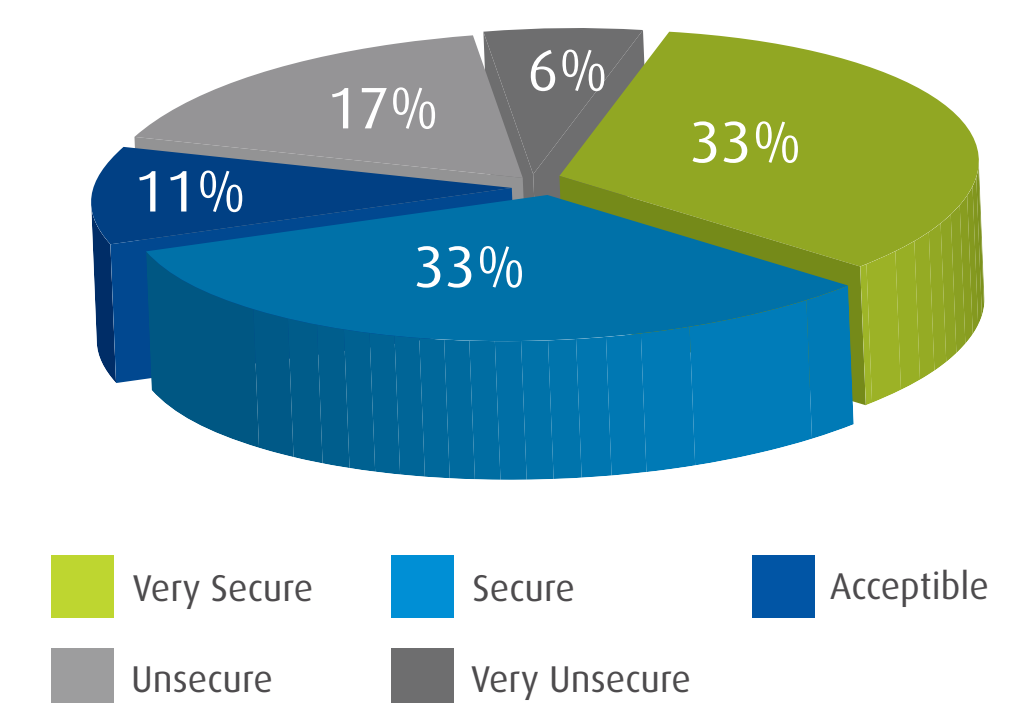
How would you rate the comfort of the evaluation pouch?



Overall Security

66% of evaluators said they found the evaluation pouch to be secure or very secure

How would you rate the overall security of the evaluation pouch?



Results and Conclusions

Each ostomate has a unique body profile and it is important that a variety of products are available for use so that everyone may find the right product to suit their individual needs. This range of pouches is the first to specifically target PHs in this way and this evaluation focused on the feedback of ostomates with PHs in varying sizes and shapes. This was the first time these ostomates had used this range and it is clear that while the larger flange suited some ostomates' needs well, it was not perfect for all participants.

Based on the feedback received, it is clear that the pouch with the soft, mouldable flange with Manuka honey incorporated into the hydrocolloid flange has, for the majority of participants, had a positive effect on the condition of their peristomal skin. These participants provided positive feedback with regards to the frequency of leakage as well as the conformability, comfort and security experienced, demonstrating a simple solution in the management of stomas for ostomates with PHs and PIs.

For more information scan here



Data held on file.
©Welland Medical Limited 2018 Welland Medical Ltd. is a Clinimed® Group Company.
Welland® is a trademark of Clinimed (Holdings) Ltd.

