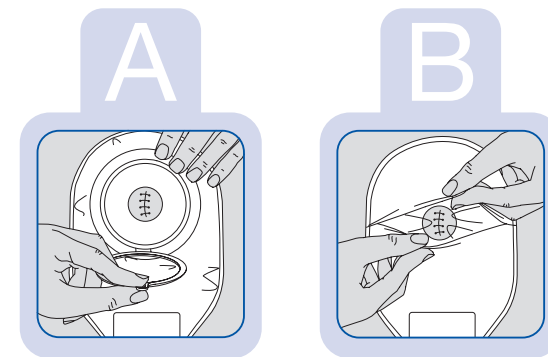


EN

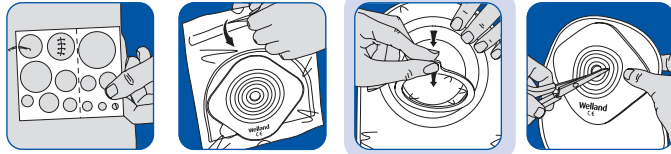
For collecting wound exudate or stoma output.

Cut wafer to adhere to intact skin surrounding wound/stoma, ensuring hole is large enough. Wear time is to be determined by healthcare professional responsible. Adaptable outlet to suit output. Not recommended for dry wounds, wounds with low moisture levels or wounds with black/necrotic tissue. Reuse of any single use device may compromise safety and performance. Discontinue use if irritation occurs.

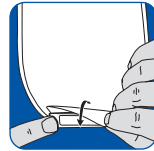
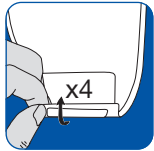
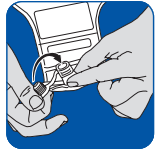
In the event of a serious incident, seek medical advice before contacting the manufacturer, Welland Medical Ltd., and your local Competent Authority via your distributor or importer.



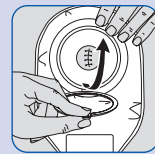
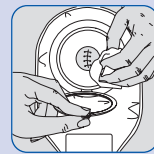
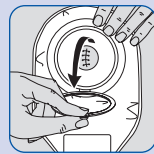
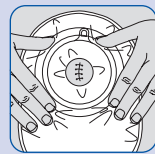
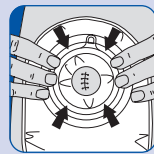
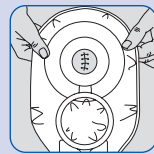
1 



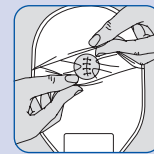
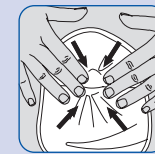
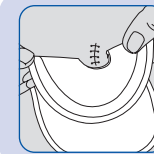
2 



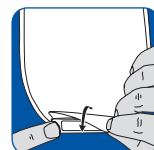
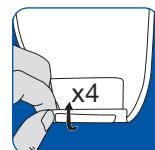
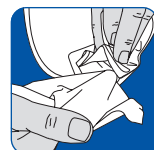
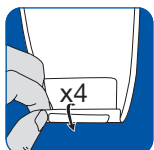
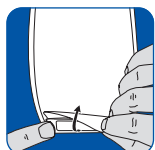
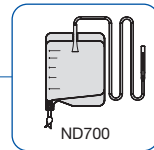
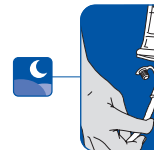
A 



B 



3 



4 

