

Title: Providing a positive outcome for a patient with ongoing stoma pain and peristomal skin issues using Aurum® 2-piece and HyperSeal® Mouldable Seals.

Author

Hillary Morgan

About the Patient

Mrs K is a 68-year-old and underwent a right Hemicolectomy for bowel cancer. She has been having chronic pain associated with her stoma and peristomal skin.

Clinical Need

Pain and Peristomal Skin Issues

Care Pathway

Aurum® 2-piece convex pouching system with Welland Hyperseal® Mouldable Seal with Manuka Honey

Introduction:

Mrs K was admitted to hospital with pain in and around her stoma. Mrs K has been having chronic stomal pain issues for some time prior to admission.

Patient Assessment:

Less than three weeks after discharge following the surgical removal of the granuloma, Mrs K was readmitted with severe stomal pain and associated sore skin issues. The patient was visibly distressed and considering stoma reversal. As shown in Figure 1.



Figure1: Severe skin issues 3 weeks post discharge of granuloma removal

On assessment, Mrs K's area of peristomal skin excoriation had extended well beyond her stoma border – her stoma looked worse than before.

It appeared that she was cutting the aperture larger to accommodate the increasing area of sore skin, which was not helping, and the pain was still an issue.

Clinical need

To introduce an alternative pouching system to provide a secure seal and prevent further leakage, whilst providing a manageable system for Mrs K to use, that would help to reduce the associated pain with her stoma.

Care Pathway

The patient was trialed with Aurum® 2-piece Convex pouch and a Welland Hyperseal® Mouldable Seal with Manuka honey, was also directly applied over her sore skin at the lower edge of the stoma.

Clinical Outcome:

The Aurum® appliance adhered well and did not leak. Mrs K felt it was comfortable and easy to manage. It was left in situ for 72 hours until reviewed by the Stomal Therapy Nurse & Surgeon.

The results where the appliance was removed at 72 hours were astonishing, (see figure 2). The skin was much inflamed, there was no bleeding, the skin appeared smoother, pinker and most importantly significantly much less pain.

The patient was discharged home the same day.

With the addition of an ostomy belt, Mrs K has experienced much less pain and discomfort, and as a result her quality of life has improved significantly.

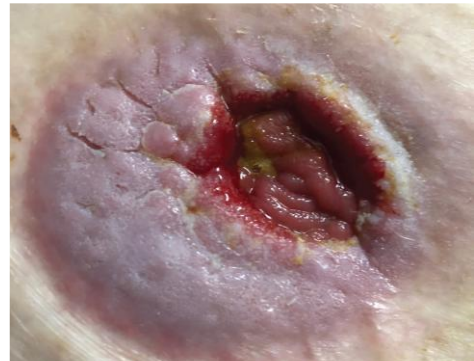


Figure 2: 72 hours post Aurum® 2-piece & Welland Manuka Honey Hyperseal® Mouldable seal with Manuka honey use



Figure 3: 8 days – using Welland Hyperseal® Mouldable Seal with Manuka Honey.

Although historically honey has been used for wound healing, there is no doubt that providing a moist wound healing environment for skin health with the use of Manuka honey in stomal products is a very welcome technology.

Moira Overview

Managing skin excoriation is a challenging pathway, as mentioned by Hillary, whether this is in wound care or as shown here for peristomal skin. The introduction of both the Aurum® Convex pouch and the use of the Hyperseal® Mouldable seal have been shown to make such a difference to Mrs K.

Not only in terms of supporting an improved peristomal skin integrity likely to have been achieved by the secure seal at the stomal/skin junction but also in terms of a pain reduction and improved quality of life for Mrs K.

Testimonial:

'Mrs K quality of life has improved significantly' Hillary Morgan, Stoma Care Nurse